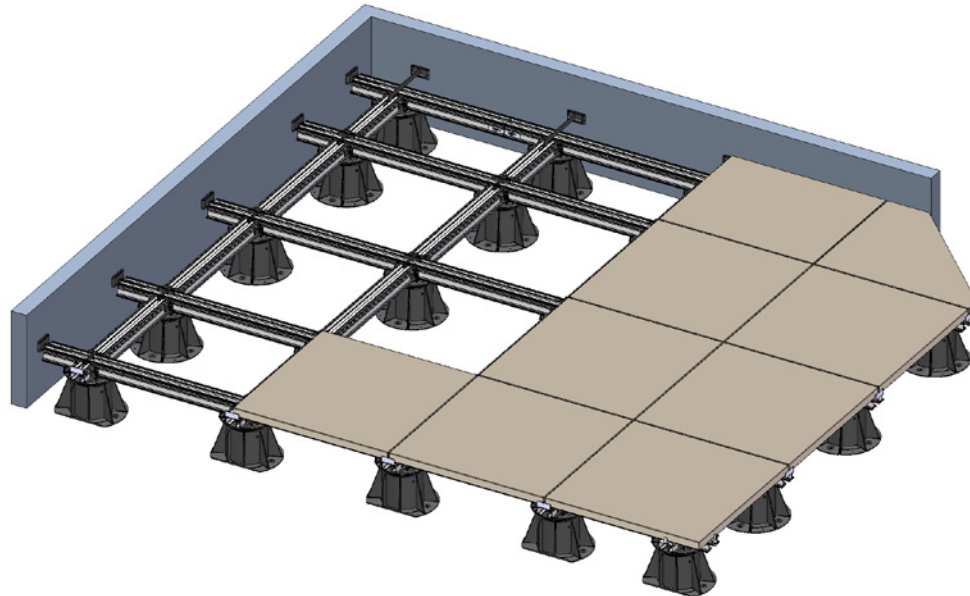




Elmich Joist System

The Elmich Joist System is a raised flooring structure for supporting pavers. The system comprises height-adjustable pedestals, aluminium joists and a range of integrated accessories for securing the flooring.



The Elmich Joist System allows for a high level of versatility and stability in the arrangement of floor pavers with height-adjustable pedestals and an array of accessories that integrate cleverly to achieve the preferred design and to allow full edge support for pavers.

The Joists are typically laid in a chequered arrangement to support the pavers on pedestals. They are first laid parallel to each other and locked to the pedestals using Joist Adaptors. Additional Joists are laid perpendicularly and secured to the parallel Joists using Perpendicular Joist Joiners.

Where required, Joists are joined to each other in a straight line or at varying angles with stainless steel Joist Joiners to construct non-rectangular floor designs.

Thermoplastic rubber strips on the top surface of the Joists provide sound and vibration dampening as well as minimize movement of pavers.

For a complete installation, proprietary Joist Spacer Tabs, Wall Spacers and End Paver Restrainers should also be employed.



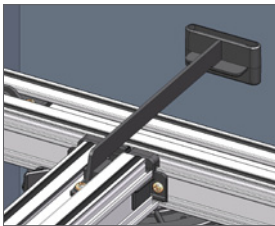
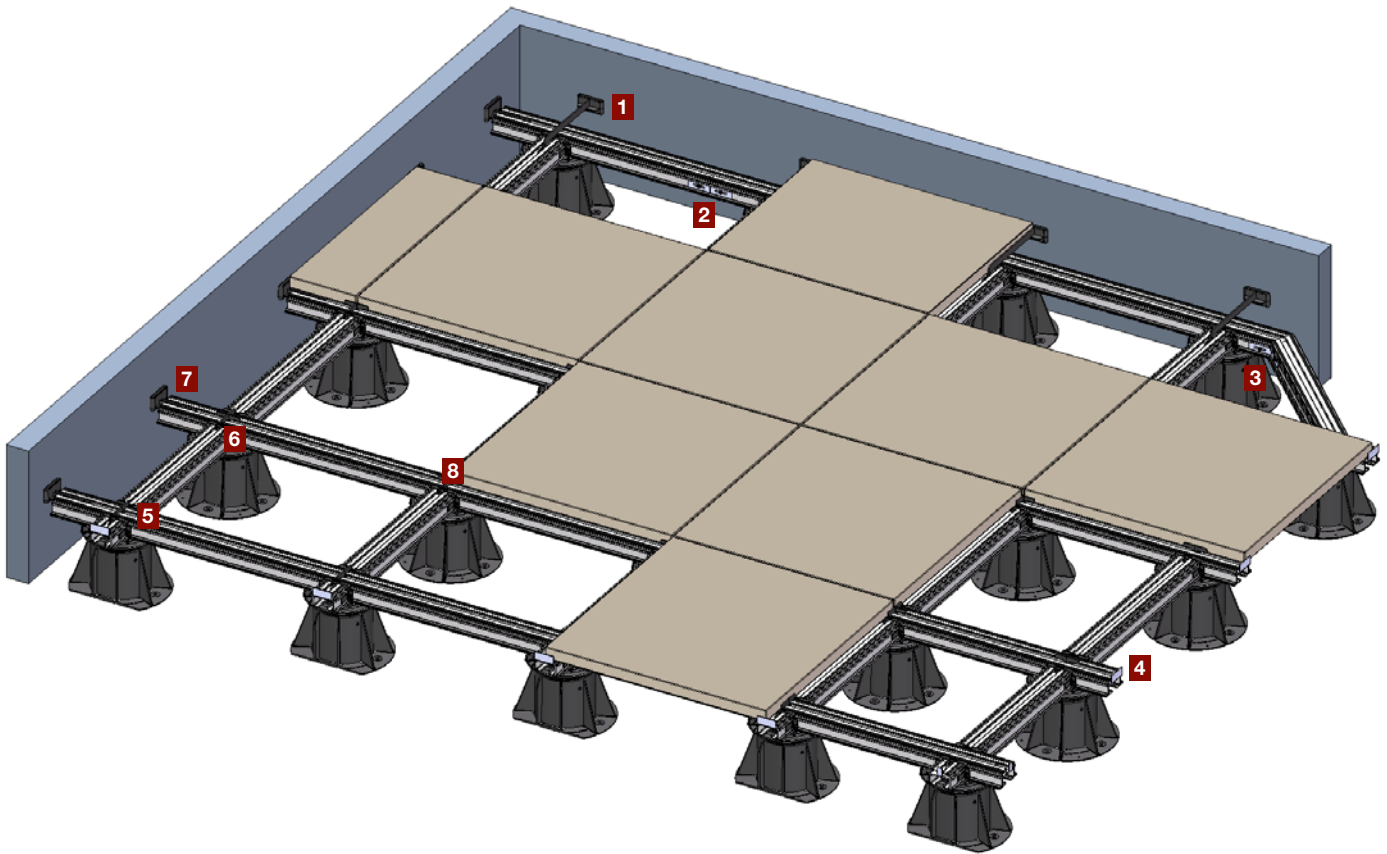
Joist



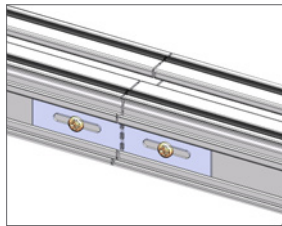
Joist Adaptor



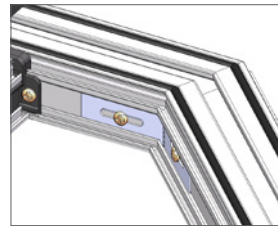
Pedestal



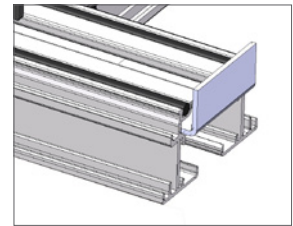
1 Side Wall Spacer



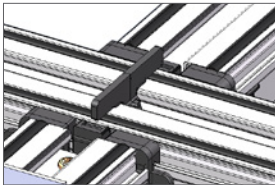
2 Side Joist Joiner (straight joint)



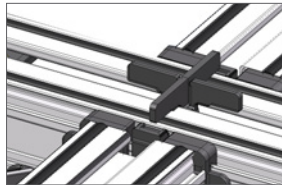
3 Side Joist Joiner (angled joint)



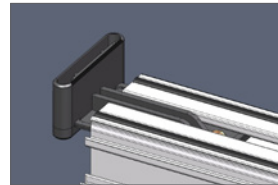
4 End Restrainer



5 Spacer Tab with 2 posts (2 removed)



6 Spacer Tab with 4 posts (original)



7 End Wall Spacer



8 Perpendicular Joist Joiner

Accessories



Side Wall Spacer



End Wall Spacer



End Restrainer



Side Joist Joiner



Spacer Tabs



Perpendicular Joist Joiner



The Elmich security hologram ensures authenticity of the products.

Distributed by:

Note: The information provided in this brochure is based on current knowledge and experience and does not infer any legally binding assurance or warranty, expressed or implied. Intending purchasers should verify whether any changes to specifications or applications or otherwise have been made since the issue of this literature. Environmentally-friendly recycled materials are used in product manufacture wherever possible. Physical product properties including colour may differ due to source of raw materials used. Colour may also fade due to UV exposure. All components of the product are designed for specific application, design calculations and any variation and/or deviation therefrom shall be the responsibility of the specifier and/or user.



ELMICH PTE LTD www.elmich.com

Singapore: (+65) 6356 2800

info@elmich.com

Singapore | Australia | Germany | Malaysia | Switzerland | USA



Management System
ISO 9001:2015
ISO 14001:2015
ISO 22301:2012
www.tuv.com
ID 9105067487

