

# TrackGard™

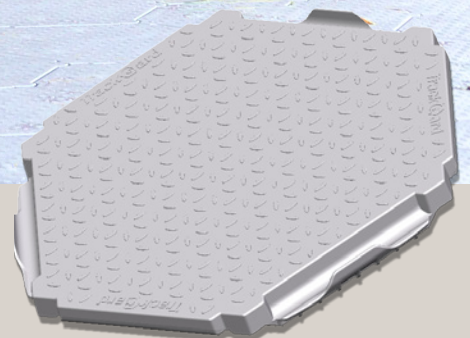
## Modular Roadway System



**Creating Cities  
Where Urban Meets Nature**

### Our Innovation Your Solution

TrackGard™ is a portable flooring suitable for temporary access and ground protection for heavy vehicles. The hexagon-shaped modules interlock to form a honeycomb structure that is able to withstand extreme loads and movement.





# TrackGard™

TrackGard™ is a robust portable flooring for temporary access and ground protection over grass, sand, gravel, mud, asphalt or other unstable surfaces. It can be installed quickly to provide a firm support base for large vehicles and equipment. It is suitable for most rigorous large-scale events ranging from concerts to military and civilian projects.



## About TrackGard™

**TrackGard™** is ideal for use at stadiums, parks, race courses for ground protection as well as at construction sites and by the military for ground surface stabilization.

The hexagonal **TrackGard™** design allows adjacent tiles to interlock on six sides to provide excellent strength for heavy moving loads.

**TrackGard™** is easily installed by unskilled labour workers as there are no clips or other moving parts and it is completely modular, interchangeable and expandable.

**TrackGard™** is made of UV-stabilized thermoplastics making it extremely durable and stable under most

weather conditions. It is waterproof, has good slip resistance, and will not warp, splinter or corrode.

**TrackGard™** is designed to support heavy weights and moving loads. For heavier applications over natural grass, such as large trucks and heavier equipment, a lightweight inexpensive geotextile may be placed underneath the tiles to aid in weight distribution to prevent “cookie cutting” under such extreme weights.

**TrackGard™** stores compactly on pallets or in custom made cages for easy transport and redeployment.





## Features and Benefits

- The perfect solution for portable flooring, temporary roads and ground protection
- Has a robust construction ideal for large vehicles and equipment
- Made from UV-stabilized thermoplastic for additional durability
- Hexagonal design has excellent strength as adjacent tiles support each other on six sides
- Easily installed and removed by unskilled labour
- Does not require any tools or additional pieces to secure tiles to each other
- Tiles are completely interchangeable and expandable
- Stores compactly on pallets or **TrackGard™** cages for easy transport and redeployment



Temporary Container Office



Outdoor Event



Golf Course Buggy Track



Construction Site



Military Vehicle Display



Beach Event



## Technical Specifications

Material	Virgin HDPE
Weight	~ 2.8 kg
Surface area	~ 0.27 m <sup>2</sup> per tile ~ 3.72 tiles per m <sup>2</sup>
Max load	
Gravel/sand surface	5 t/wheel
Wet surface	3 t/wheel
Assembly rate	~ 100 m <sup>2</sup> /person/hr
Slip Resistance (SS 485: 2001)	
Wet pendulum testing	Class X
Dry friction testing	Class F

## Applications

- Stadiums and sports fields
- Parks
- Race courses
- Field hospitals and shelters
- Access roads
- Maintenance areas
- Beach access
- Construction sites



Steel Ramp for Heavy Vehicles



Aluminium Ramp for Pedestrians and Light Vehicles



Look for the Elmich security hologram applied on all our products to ensure best quality and original Elmich product.

## Distributed by:

**Note:** The information provided in this brochure is based on current knowledge and experience and does not infer any legally binding assurance or warranty, expressed or implied. Intending purchasers should verify whether any changes to specifications or applications or otherwise have been made since the issue of this literature. Environmentally-friendly recycled materials are used in product manufacture wherever possible. Physical product properties including colour may differ due to source of raw materials used. Colour may also fade due to UV exposure. All components of the product are designed for specific application, design calculations and any variation and/or deviation therefrom shall be the responsibility of the specifier and/or user.



**ELMICH PTE LTD** [www.elmich.com](http://www.elmich.com)

Singapore: (+65) 6356 2800

[info@elmich.com](mailto:info@elmich.com)

Singapore | Australia | Germany | Malaysia | Switzerland | USA



Management System  
ISO 9001:2015  
ISO 14001:2015  
ISO 22301:2012  
[www.tuv.com](http://www.tuv.com)  
ID 9105067487

