

DeckLink™ RT

Hidden Fastener for Removable Timber Tiles



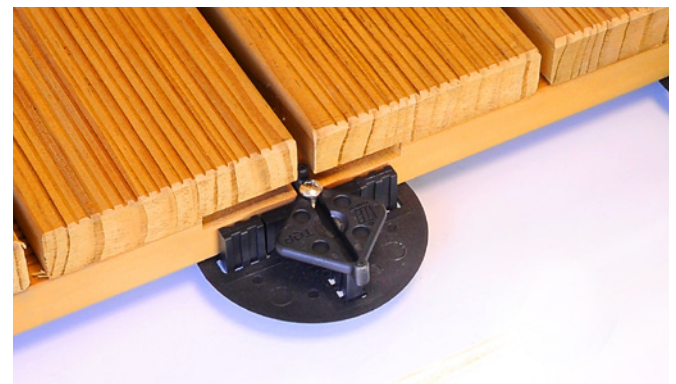
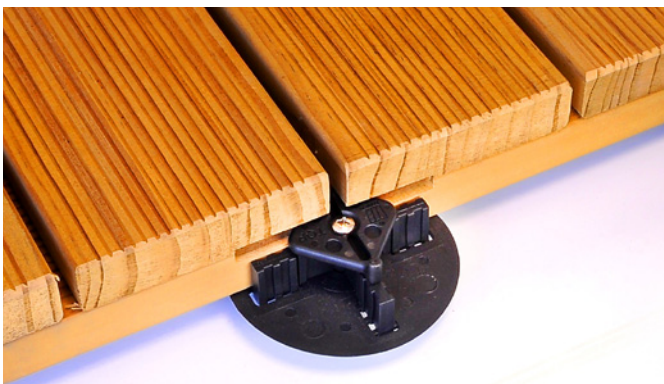
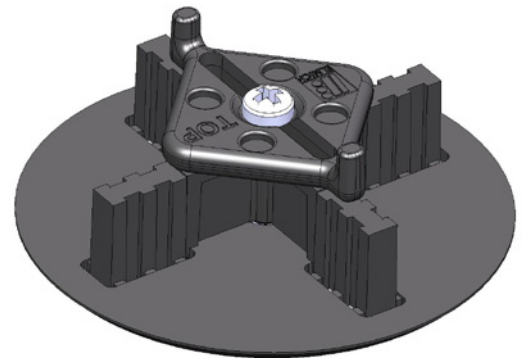
DeckLink™ RT is for securing timber tiles in building raised decks supported on Elmich pedestals.

DeckLink™ RT is for building timber tile decks with hidden fixings. It allows individual deck tiles to be removed and/or replaced for maintenance and access to services beneath the deck without removing and potentially damaging several tiles.

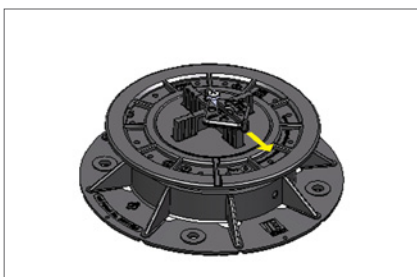
DeckLink™ RT is a diamond shaped fastener that holds the deck tiles in place utilising the slots in the sides, with a screw that attaches to the tile spacer for fixing the DeckLink™ RT to a pedestal.

DeckLink™ RT is designed for gaps between the deck tiles of 5mm wide, which matches the gaps between the individual boards in the deck tiles.

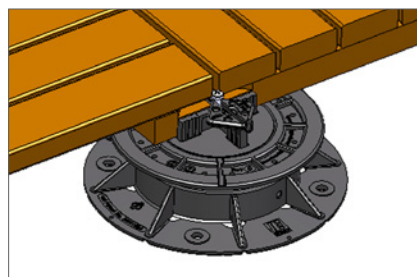
DeckLink™ RT Fastening Disc slides in 2 directions to secure or release the tiles by pushing against the posts at the ends of the fastener through the gap between the tiles after slightly loosening the screw.



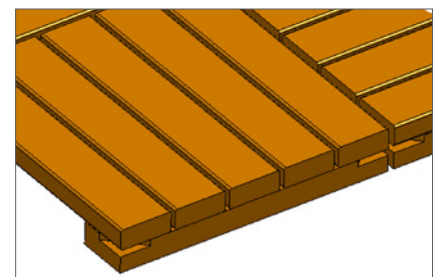
Installation



Step 1
Loosen screw and slide Fastening Disc to one side.



Step 2
Place tiles on side away from Fastening Disc.



Step 3
Insert remaining tiles. Slide Fastening Disc, aligning its centre with the centre of an Elmich pedestal. Tighten screw.



A security hologram has been applied on all our products to ensure that the end-user receives the best quality and original Elmich product.

Distributed by:

Note: The information provided in this brochure is based on current knowledge and experience and does not infer any legally binding assurance or warranty, expressed or implied. Intending purchasers should verify whether any changes to specifications or applications or otherwise have been made since the issue of this literature. Environmentally-friendly recycled materials are used in product manufacture wherever possible. Physical product properties including colour may differ due to source of raw materials used. Colour may also fade due to UV exposure. All components of the product are designed for specific application, design calculations and any variation and/or deviation therefrom shall be the responsibility of the specifier and/or user.



ELMICH PTE LTD www.elmich.com

Singapore: (+65) 6356 2800

info@elmich.com

Singapore | Australia | Germany | Malaysia | Switzerland | USA



Management System
ISO 9001:2015
ISO 14001:2015
ISO 22301:2012
WORLD BANK CODE
ID 9105067487

