

VersiDrain® 8

Dimpled Plastic
Drain Sheet



VersiDrain® 8 is a dimpled plastic sheet with applications for:

- Internal drainage of basement walls
- Creating a capillary break and replacing sub-base in ground slab construction
- Waterproofing membrane protection of underground structures

VersiDrain® 8 acts as a barrier to give protection to the waterproofing membrane from backfill. The dimples create a vapour and thermal insulation barrier in both internal walls and adjacent to waterproofing membranes.

VersiDrain® 8 offers protection against rising damp in ground slabs and replaces traditional lean concrete sub-base slabs without compromising the load-bearing capacity of the sub-base.

VersiDrain® 8 creates a cavity control layer when placed between the reinforced concrete base and concrete floor surfaces in chemical storage areas allowing continuous monitoring to determine leakage of chemical containers.

Applications

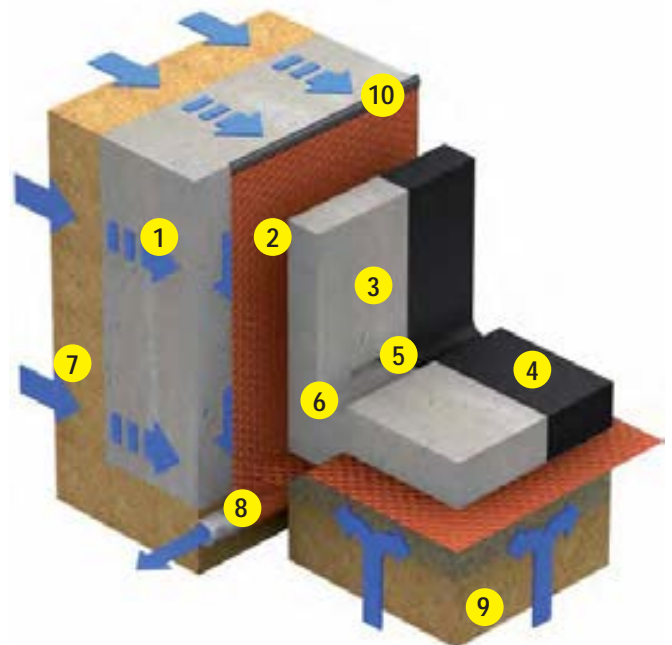
Typical areas of application include:

- Basement walls
- Tunnels
- Ground slabs
- Hazardous chemical storage areas

Advantages

- Diagonal dimple configuration with high compressive strength of 250 kN/m² (25 t/m²)
- Provides an effective protection layer over waterproofing membranes
- Acts as a fail-safe drainage system for double-walled underground structures
- Approved by German authorities for use in hazardous chemical storage areas
- Avoids the need for a sub-base slab in ground slab construction
- Wide and easy to handle rolls result in rapid and low cost installation

1. Diaphragm wall
2. VersiDrain® 8
3. Internal wall
4. Waterproofing membrane
5. Weep-hole
6. Scupper drain
7. Soil
8. Drain Pipe
9. Compacted Gravel
10. VersiDrain® Edge Profile



Drainage of Internal Basement Walls
and Ground Slabs

Specifications

Material: High density polyethylene

Weight: approx. 580 g/m²

Sheet thickness: approx. 0.6 mm

Dimple height: 8 mm

Void volume between dimples: approx. 5.3 l/m²

Drainage capacity: approx. 4.6 l/s.m
approx. 276 l/min.m
approx. 16,560 l/h.m

Compressive strength: approx. 250 kN/m² (25 t/m²)

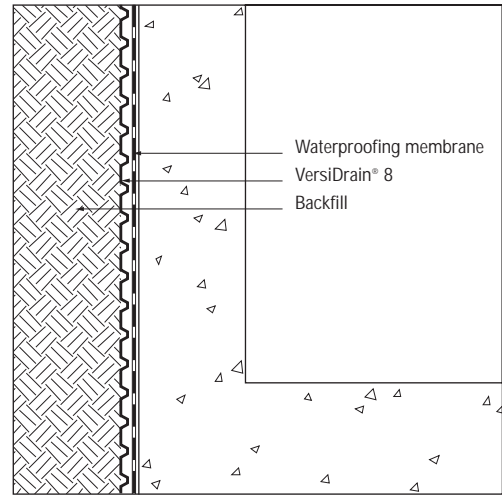
Service temperature: -30°C to 80°C

Biological/chemical resistance: Resistant to ground chemicals, rot, moulds, algae, bacteria and root penetration. Does not affect potable water.

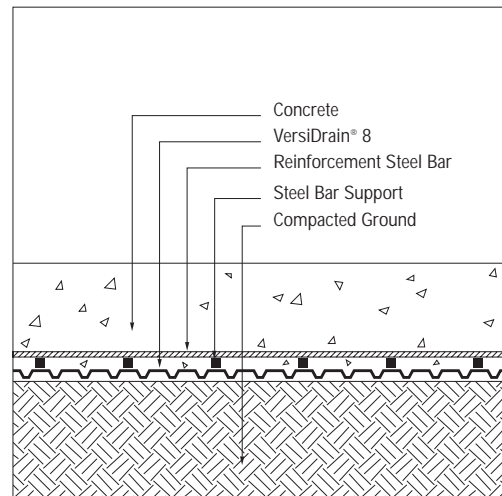
Fire resistance: B2 (DIN 4102)

VersiDrain® 8 may be fastened to substrates using proprietary VersiDrain® fixing accessories.

VersiDrain® 8 is manufactured and tested according to DIN 18 195, DIN 4095, DIN 4102, DIN 53 576 and BS 8102.



Waterproofing Membrane Protection Below Ground



Capillary Break for Ground Slab



VersiDrain® 8 resists puncturing and provides drainage and rising damp protection under concrete slabs



Note: The information provided in this brochure is based on current knowledge and experience and does not infer any legally binding assurance or warranty, expressed or implied. Intending purchasers should verify whether any changes to specifications or applications or otherwise have been made since this literature was issued.

Singapore Office: +65 6356 2800
Australia Office: +61 2 9648 2073

www.elmich.com

Distributed by: