

**Creating Cities
Where Urban Meets Nature**



VersiWall™ GP Tray Planter

Vertical Greening Pocket



Our Innovation Your Solution

Elmich VGP™ Living Wall offers architects and developers a cost-effective solution to turn monotonous walls into aesthetically-pleasing living green walls with the flexibility of choosing from an array of mounting options to suit existing wall conditions.

Engineered in Australia



VersiWall™ GP Tray Planter

VersiWall™ GP offers a simple solution for installation of aesthetically-pleasing living walls.



VersiWall™ GP Tray

About Elmich VGP™ Planter Wall

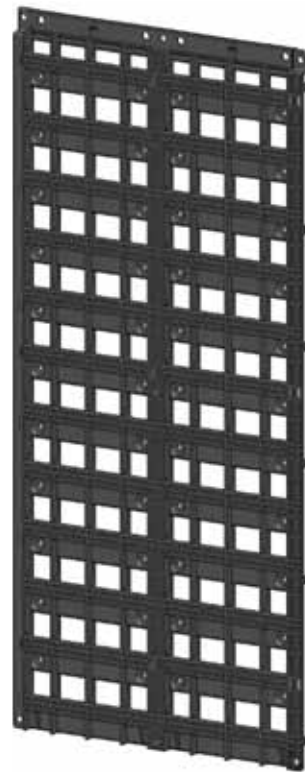
The VersiWall™ GP is an easy-to-install and low-maintenance modular vertical greening system with a choice of mounting, planting density and growth media options to suit different wall conditions.

Depending on plant size and planting density selected, VersiWall™ GP Trays allow plant spacings of 200mm and 250mm horizontally and 150mm and 225mm vertically.

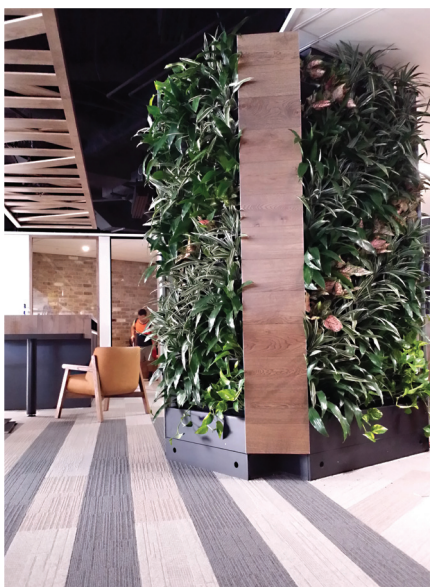
VersiWall™ GP Trays can be individually replaced or removed for wall maintenance or design change. Each VersiWall™ GP Tray has a water reservoir with a cover designed for the provision of a capillary wick to re-use stored water and facilitate sustained plant growth.

The use of mounting frames minimises wall penetrations and enables installation to be carried out easily and safely by just one person.

VersiWall™ GP Trays and VersiWall™ GP Mounting Panels are manufactured from UV-stabilised recycled polypropylene that meets requirements for international “Green Building” certification.



VersiWall™ GP Mounting Panel

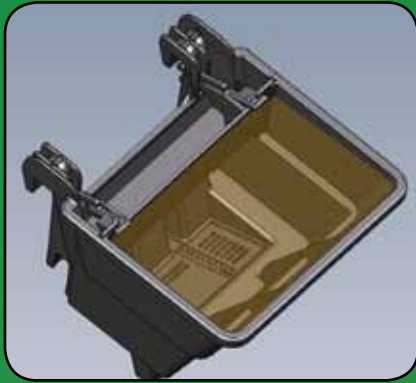


* VersiWall™ GP has international patent pending.

Distinctive Features

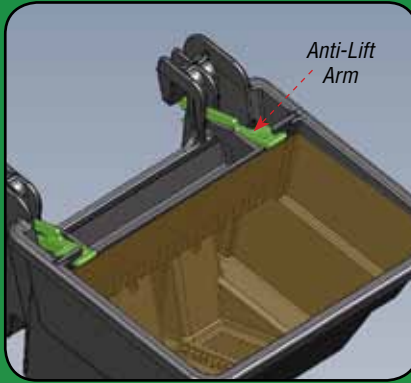
Planting Media

Suitable for most green wall plants using different planting media.



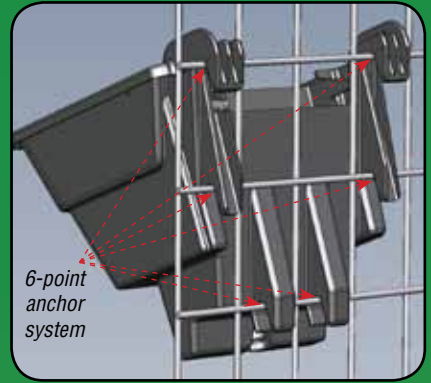
Safety

Anti-lift arms prevent inadvertent dislodgment of trays.



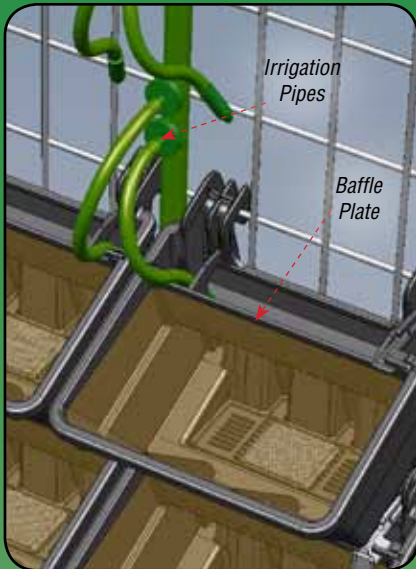
Universal Mounting

Able to install on different mounting frames with 6-point anchoring system.



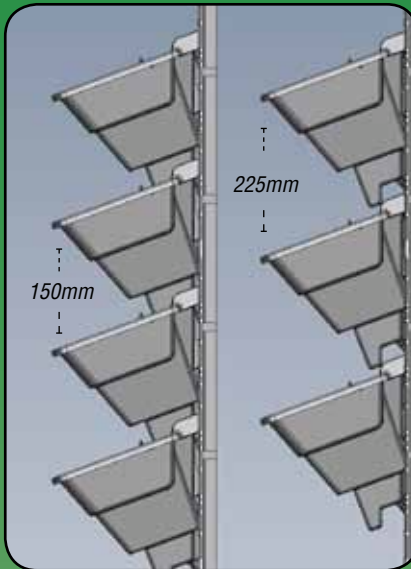
Baffle Plate

Distributes irrigation across the Tray and prevents media spillage.



Planting Density

Allows different vertical and horizontal spacing for varied planting options.



Drainage

Excess water flows into underlying trays or is discharged through drainage pipe.



Projects



Indoor and Outdoor Green Walls

Technical Specifications

VersiWall™ GP

Material	Recycled Polypropylene (UV stabilised)		
Size (mm)			
Tray	Overall	195 (W) x 207 (H) x 192 (D)	
	Nominal	200 (W) x 150 (H) x 195 (D)	
Mounting Panel	Overall	418 (W) x 925 (H) x 22 (D)	
	Nominal	400 (W) x 900 (H) x 22 (D)	
Planting Media Volume (l)	~ 1.8		
Weight (kg/m²)			
Close Planting (~33 trays)	~ 93		
Spaced Planting (~22 trays)	~ 62		
Vertical Distance between trays (mm)			
@150mm pitch	0 (trays overlap)		
@225mm pitch	40		
Biological / Chemical Resistance	Unaffected by moulds and algae Good resistance to alkali and bitumen		

Advantages

Planting Media - Allows wide choice of planting media for green wall plants.

Safety - Anti-lift arms prevent inadvertent dislodgement of trays.

Drainage - Excess water flows into underlying trays or is discharged through drainage pipe.

Baffle Plate - Distributes irrigation across the Tray and prevents media spillage.

Planting Density - Allows different vertical and horizontal spacing for varied planting options.

Water Re-use - Capillary wick draws stored water and fertilizer from reservoir.

Irrigation - Irrigation pipes are concealed neatly at the rear between Trays.

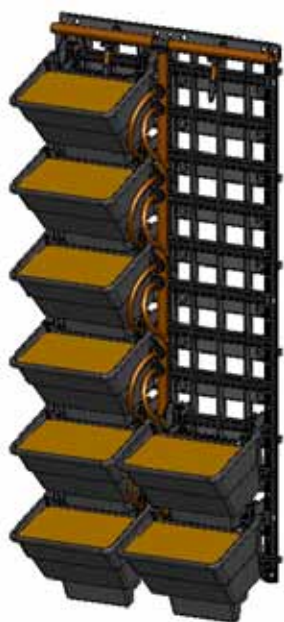
Universal Mounting - Able to install on different mounting systems with up to 6 universal anchoring points.

Mounting Panel - Simplifies installation with minimal wall penetrations and less bolts are needed.

Soil Volume - Holds 1.8L of soil equivalent to volume in 150mm dia. pot.

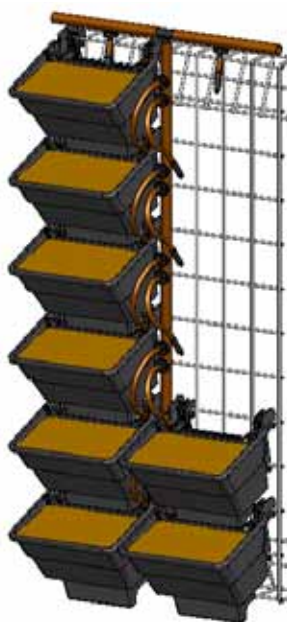
Tray Width - 200mm tray width allows flexibility in plant spacing and tray layout.

Mounting Systems



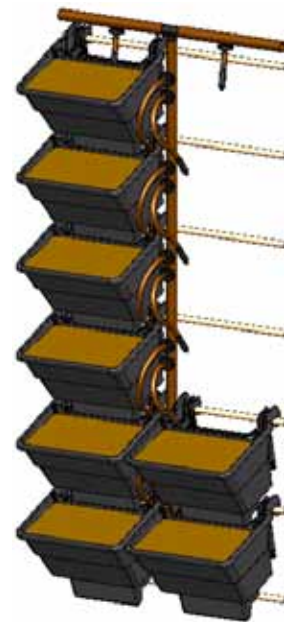
VersiWall™ GP Mounting Panel

Easy to install proprietary panel made from recycled plastics.



Welded Mesh

Standard welded mesh with rod spacing 50mm wide x 75mm or 150mm high.



Steel Rods

Steel rods at 75mm or 150mm intervals providing a more minimalistic design.

Distributed by:

Note: The information provided in this brochure is based on current knowledge and experience and does not infer any legally binding assurance or warranty, expressed or implied. Intending purchasers should verify whether any changes to specifications or applications or otherwise have been made since the issue of this literature. Environmentally-friendly recycled materials are used in product manufacture wherever possible. Physical product properties including colour may differ due to source of raw materials used. Colour may also fade due to UV exposure. All components of the product are designed for specific application, design calculations and any variation and/or deviation therefrom shall be the responsibility of the specifier and/or user.



ELMICH PTE LTD www.elmich.com

Singapore: (+65) 6356 2800

info@elmich.com

Singapore | Seattle | Sydney | Zurich | Guangzhou | Shanghai

